



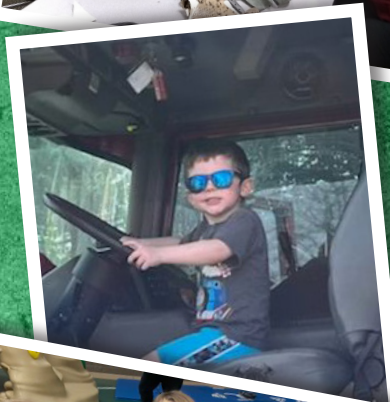
The Breckenridge Broadcast

Back to School Edition

**BRECKENRIDGE
COMMUNITY EDUCATION**

**EARLY CHILDHOOD
FAMILY EDUCATION**

Fall 2023





Welcome



Welcome to a new season of opportunities for lifelong learning. Our brochure is filled with learning opportunities for people of all ages and interests. Some of our classes are just one night, others last several weeks. Popular classes fill quickly, so we encourage you to register early. Call 218-643-6822 if you have questions or would like to see particular programs or services offered in Breckenridge.

Contact Info

Community Services
Kristie Sullivan, Director

Community Education
Courtney Diestler, Coordinator

School Age Child Care (Fun Club)
Dee Nelson, Coordinator

Youth Program
Julie Ernst, Director

Early Childhood
Molly Olson, Coordinator

Class Locations

BHS - Breckenridge High School, 710 N. 13th St. Park on west side and enter through main doors.

BES - Elementary School, 810 Beede Ave. Park on south side and enter through main doors. (#2)

ECFE - Elementary School. 810 Beede Ave. Park on south side and enter through main doors. (#2)

Online

Prior to the class a link will be sent to your email to access the class.

Other

Some classes or events may be located outside of Breckenridge Public Schools. Please see information regarding the class to verify location.

Table of Contents

| | |
|---------------------------------|-------|
| Community Education | 3-10 |
| ECFE Classes | 11-13 |
| Library News | 14 |
| Registration (Comm. Ed/ECFE) .. | 15 |
| OSPTI | 16 |
| Greenquist Academy | 17 |
| Back to School | 18-23 |

THINGS TO KNOW...

Do you have a special skill or talent?

Would you like to share it with others?

We are always looking for new and interesting classes to offer and people willing to teach them. You do not need to be a certified teacher. All you need is a desire to share your talent and enthusiasm with others. Please call Courtney Diestler at 218-643-6822.

Your satisfaction is guaranteed!

If for any reason your class does not meet your expectations, we will give you a credit for your class fee. We offer this guarantee because we believe our classes will meet or exceed your expectations. It is our goal to develop lasting relationships built on quality programs and excellent service.

Breckenridge Broadcast designed and published by



It is Breckenridge Public Schools policy to provide equal education opportunity for all students. The school district does not unlawfully discriminate on the basis of race, color, creed, religion, national origin, sex, marital status and parental status, status with regard to public assistance, disability, sexual orientation or age. The District's Section 504 Coordinator for grades K-12 is Noah Brenden 7-12 Counselor, phone 218-643-6822, brendenn@isd846.org



Community Education



COMMUNITY EDUCATION

UPDATES!

BRECKENRIDGE **COMMUNITY EDUCATION MAIN OFFICE**
HAS MOVED TO THE BRECKENRIDGE HIGH SCHOOL.
YOUTH PROGRAMS, FUN CLUB, ECFE & PRESCHOOL WILL REMAIN AT
THE ELEMENTARY SCHOOL.

COMMUNITY EDUCATION IS MADE UP OF SEVERAL AREAS.
FOR MORE INFORMATION ON YOUR AREA OF INTEREST, PLEASE SEE BELOW:



ADULT ENRICHMENT CLASSES, ADULT BASIC EDUCATION & GENERAL COMMUNITY ED QUESTIONS

(CHANHASSEN, FINANCE CLASSES, ONLINE CLASSES, ETC.)

CONTACT: COURTNEY DIESTLER, COORDINATOR
LOCATION: BRECKENRIDGE HIGH SCHOOL



YOUTH PROGRAMS

(FLAG FOOTBALL, VOLLEYBALL, BASKETBALL, YOUTH ENRICHMENT, ETC.)

CONTACT: JULIE ERNST
LOCATION: BRECKENRIDGE ELEMENTARY SCHOOL



FUN CLUB

(SCHOOL AGED CHILD CARE/AFTER SCHOOL PROGRAM)

CONTACT: DEE NELSON
LOCATION: BRECKENRIDGE ELEMENTARY SCHOOL



PRESCHOOL & PRE-K

(AGES 3-5 YEARS)

ECFE CLASSES

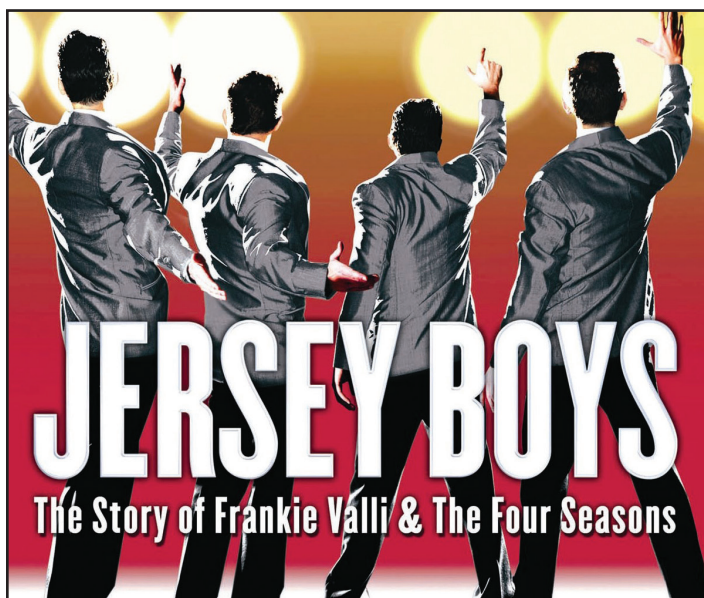
(EARLY CHILDHOOD FAMILY EDUCATION)

CONTACT: MOLLY OLSON
LOCATION: BRECKENRIDGE ELEMENTARY SCHOOL

Breckenridge High School
710 13th St N
Breckenridge, MN 56520

218-643-6822
www.isd846.org

Breckenridge Elementary
810 Beede Ave
Breckenridge, MN 56520



Chanhassen Dinner Theatre Presents... Jersey Boys

With phenomenal music, memorable characters and great storytelling, Jersey Boys follows the fascinating evolution of four blue-collar kids who became one of the greatest successes in pop-music history. Winner of Best Musical at both the Tony Awards® and Olivier Awards®, Jersey Boys takes you behind the music of Frankie Valli and The Four Seasons to discover the secret of a 40-year friendship as the foursome work their way from the streets of New Jersey to the heights of stardom. Experience electrifying performances of chart-topping hits including "Sherry," "Big Girls Don't Cry," "Can't Take My Eyes Off You," "Dawn" and "My Eyes Adored You" which brought The Four Seasons the highest honor: induction into the Rock 'n' Roll Hall of Fame.

We'll board a charter bus by the swimming pool parking lot south of the Breckenridge High School at 7:15 a.m. and stop at Charlie's in Freeport for coffee, arriving at the Chanhassen Theatre around 11:00 a.m. for a meal and the 1:00 p.m. matinee performance. Then it's back on the bus for the trip home. We'll stop along the way for a snack and be back between 7:30 and 8:00 p.m. Coffee and evening pit stop on your own. No refunds after September 5th.

Transportation and admission \$120.00
Wed., October 4, 2023
Please register by September 5
Park in swimming pool parking lot

Intro Into Genealogy

Jen Shaffer

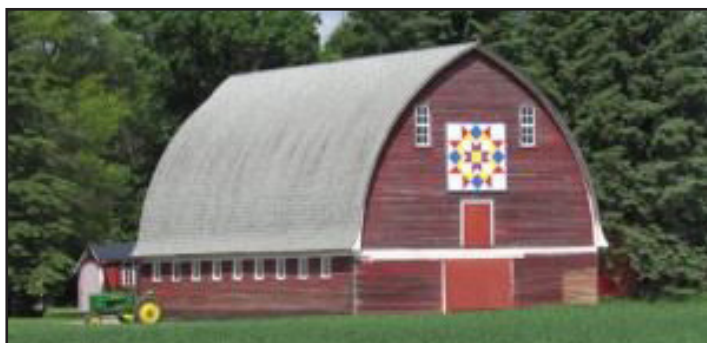
There has never been a better time to start discovering your family's history. Gone are the days of traveling to courthouse basements and archives. You can now research easily from your own home. Join me as I teach you how to get started, the best websites and tools to use, along with how to be an effective and accurate researcher. Jen Shaffer is a full-time professional genealogist and co-owner of The Formidable Genealogist. She strives to make genealogy skills more accessible to budding genealogists. She resides in the Twin Cities.

This class will be conducted online and instructions will be provided well in advance. No software will need to be downloaded when using a computer, you'll simply click on a link. If you are using a phone or an ipad, it will prompt you to download an app. You will receive your invitation to the email you provided during registration.

1 class, \$25

Wed., November 1, 7:00-8:00p.m.

Location: Online



Barn Quilts

Barn quilts are painted, bold public art that celebrate farm and family life. They can be found on barns and buildings and they offer a splash of color to any yard. In this class you will learn the history of Barn Quilts, learn the simple techniques of painting them, and create your own 2' x 2' barn quilt. You will leave with patterns and ideas for making additional Barn Quilts. All supplies are included in the class fee.

1 class, \$65

Sat., November 11, 9:00 a.m.-3:00 p.m.

Location: Crooked Lane Farm
27385 County Road 4 Colfax, ND 58108



Community Education



Metabolism Boosters & Busters

Janice Novak, M.S

In the past you probably could drop weight by cutting back on calories or exercising a bit more. But then suddenly the scale stops moving, and you just can't seem to lose weight. The good news - You could lose up to 20 pounds in a year - without eating less. Just by revving up your metabolism, you can burn more calories every day, lose fat, boost energy, feel stronger and more fit. In this class, you will learn 20 simple things you can do every day to boost your metabolism and burn as much as 30% more calories every day.

1 class, \$22

Tue., November 28, 6:00-7:30 p.m.

Location: Online

Acupressure To Relieve Stress, Anxiety, Insomnia & More

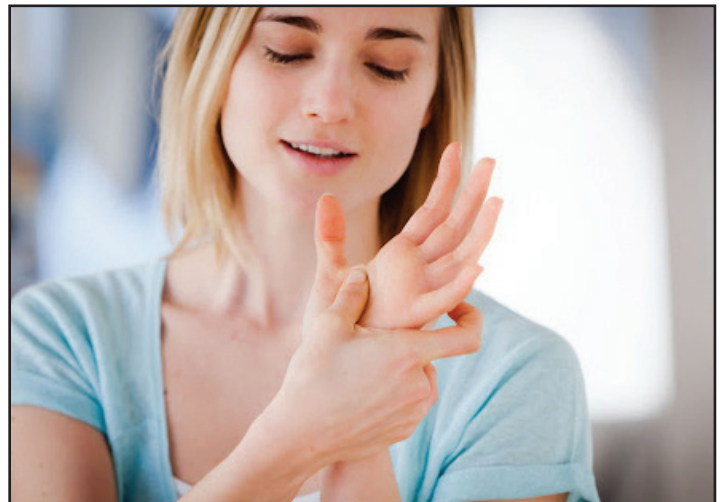
Janice Novak, M.S

Acupressure is an ancient healing art and self-help tool. It can offer great relief with no side effects and help you feel your best. Along with the specific points to help relieve stress, insomnia, anxiety, irritability and even weight gain, learn the Nine Master Pressure Points which are the most helpful and most frequently prescribed to help and assist every system in your body.

1 class, \$22

Mon., December 11, 6:00-7:30 p.m.

Location: Online



Adult Education Classes

Adult education is for anyone age 17 or older who is not presently enrolled in a secondary school and whose educational skills are below the 12th grade level in any of the basic academic areas of reading, math, writing or speaking English. Our program offers the opportunity to:

- Prepare for High School Equivalency exams: GED and HiSET
- Earn a MN Adult Diploma
- Improve English Skills
- Explore career and post-secondary options

In person (Wednesday evenings) and online learning

Enroll: <https://www.isd152.org/o/abe/page/enroll>

Questions? Call 218-284-3643





Community Education



Junior Wildlife Club

Do you enjoy the outdoors? The Junior Wildlife Club is for youth in the community ages 8 through 16. All activities are free to participants and geared towards introducing kids to wildlife and habitat conservation. Join us for opportunities to explore the great outdoors!

| | |
|------------------|-------------------------|
| Thurs., Sept. 21 | Dog Handling |
| Thurs., Oct. 19 | Outdoor Survival Skills |
| Thurs., Nov. 16 | Archery |
| Thurs., Jan. 18 | Air Rifle |
| Thurs., Feb. 15 | Tracking ID-Animal |
| Thurs., March 21 | Bird Houses |
| Mon., April 29 | Prairie Wetland Walk |
| Thurs., May 16 | Outdoor Cooking |

Interested in joining the Junior Wildlife Club? Register and get on the e-mail list by calling: Wahpeton Park & Rec at 701-642-2811 or Cindie VanTassel at 218-643-4374. For more info, visit www.rrasc.net. Find us on Facebook: Red River Area Sportsmen's Club.



Dog Obedience Training Class

Mary Morris

An effective training that will help make your dog become a well behaved member of your family. Training will also help to build a closer relationship with your 4 legged family member. The class consists of training leave it, sit, down, stay, loose leash walking. Family needs to commit to working/ training their dog daily, multiple times a day. Dogs must be up-to-date on all vaccinations including Kennel Cough vaccine.

Please bring your dog on a collar with a 4 or 6 foot leather or cloth leash (no chain, cables, or flexi leashes). Bring small soft training treats or small pieces of food for rewards. Please bring a chair to sit in. No reactive or aggressive dogs will be allowed.

7 classes, \$70, 6:45-7:45 p.m.

Mon., September 11, 18, 25, October 2, 9, 16, 23
Breckenridge School Bus Garage
109 North 11th Street, Breckenridge

Youth Enrichment Program (YEP!)

The Youth Enrichment Program focuses on the development of lifelong hobbies through enriching after-school activities. Third through sixth graders at Breckenridge Elementary and St. Mary's Schools are eligible to participate.





Community Education



Instant Piano for Hopelessly Busy People

1 class, \$59.00/person

Mon., November 13, 6:30-9:30 p.m.

Live Zoom class (Zoom link will be emailed out prior to the class)

Instant Guitar for Hopelessly Busy People

1 class, \$59.00/person

Tues., November 14, 6:30-9:00 p.m.

Live Zoom class (Zoom link will be emailed out prior to the class)

In just a few hours, you can learn enough secrets of the trade to give you years of musical enjoyment. Learn to play piano or guitar the way professionals do. These classes are being held online via ZOOM and you will be able to learn in the comfort of your own home. Since this course includes an online book and online follow-up video lessons, you will be able to continue your practice and study on your own. An optional periodic online question and answer session is included along with a recording of the class. The course is partly lecture/demonstration and partly hands-on instruction.

Piano Topics include:

- How chords work in a song
- How to get more out of sheet music by reading less of it
- How to form the three main types of chords
- How to handle different keys & time signatures
- How to avoid "counting"
- How to simplify over 12,000 complex cords

Guitar Topics include:

- How chords work in a song
- How to form the three main types of chords
- How to tune your guitar
- Basic strumming patterns
- How to buy a good guitar and what to avoid
- How to play along with simple tunes

Instructor Bio:

Craig Coffman is a Music Instructor who has successfully taught Instant Piano and Guitar to over 30,000 students in 16 states throughout the US and also overseas. You can find more information about his classes on www.chordsarekey.com.

Register online at www.isd846.org under Community Ed



Sometimes excellent courses are cancelled because people wait until the last minute to register. Please register early to avoid disappointment for yourself or others.

We have great after school programs! School Age Child Care (SACC)

Laughter, excitement, friends and good times. All these things and more happen at the Breckenridge SACC Fun Club, a place to go to be safe and have fun. Fun Club is a service for families who have children in pre-kindergarten through 6th grade at Breckenridge Public or St. Mary's Schools. Fun Club, located in Room 270 of the Elementary School, is open from 3-6 p.m., Monday-Friday. On days when school lets out early, Fun Club will open at the time of dismissal until 6:00 p.m. Services will be provided on in-service days. Call 218-641-4010 for more information.



Community Education



Social Security Planning: What You Need to Know to Maximize Retirement Income

Foundation for Financial Education, Michael Neppel

Social Security is far more complicated than most people realize. Questions like: When should I apply? Are benefits taxed? If I continue to work after benefits begin, what is the earnings test and how does it affect my Social Security monthly benefit? How can I best maximize my benefits? How do I incorporate my retirement accounts to maximize my Social Security benefits? Decisions that you make will have a HUGE impact on the total benefits you will receive. Those attending can request a free report of their own personal claiming strategies.

1 class, Free, BES/233

Tue., October 3, 7:00-8:30 p.m.



Medicare and Open Enrollment

Foundation for Financial Education, Michael Neppel

Medicare is a national health insurance program for Americans age 65 and over and for those receiving Social Security disability benefits. Original Medicare had Parts A & B; it has been expanded to include Parts C & D. In what should be an easy concept, it has become somewhat muddled. We'll clear up any confusion or misconceptions that you might have.

1 class, FREE, BES/233

Tues., October 10, 7:00-8:30 p.m.

No News is Good News!

After registering, the only time you will hear from us is . . .

. . . if there is a change in the time or date.

. . . if the class is full.

. . . if the class is cancelled.

So, if you haven't heard from us - it's good news!



Soothe Those Achy Joints

Janice Novak, M.S

Do you have joints that ache - a knee or hip or back? Whether you have arthritis, bursitis or just creaky joints, this workshop is for you. Joint lubrication exercises are quite simple and easy to do yet produce rather remarkable results by helping to free your joints of pain. We'll also discuss which nutrients are needed to help keep your joints healthy.

1 class, \$22

Mon., October 9, 6:00-7:30

p.m. Location: Online



Pickleball

Pickleball is a fun, easy-to-learn sport that combines tennis, badminton, and table tennis. Come learn how to play the popular, fast-growing sport indoors at the Breckenridge High School. Paddles and balls will be provided. You may join at any time. We welcome novice and experienced Pickleball players of all ages. Stop in to check it out! Weather permitting, we will play pickleball outside on the pickleball courts east of the swimming pool. Class fees go toward new equipment.

24 classes, \$10.00

Wed., October 18-March 28, 6:00-8:00 p.m.

BHS/Gym Commons Area



Community Education



Defensive Driving Refresher: *Coaching The Mature Driver*

Amanda Frederick

This course is for drivers who have years of behind the wheel driving experience. Refresh your knowledge of defensive driving techniques and upgrade your skills to help keep you collision free. This class is for those who have never attended a Defensive Driving class. Participants over 55 may qualify for auto insurance discounts after completion of eight hours of class time. No examinations will be given, but full day attendance is required. Presented in cooperation with the Minnesota Safety Council.

FREE: Please register for class.

Limited spots available

Wed., October 11, 8:00 a.m.-4:30 p.m.

Wilkin Co. Recycling Center Conference Room

505 8th St. S, Breckenridge

Lunch Provided



Defensive Driving Refresher: *Coaching The Experienced Driver*

Amanda Frederick

This 4-hour refresher is for drivers who have completed the 8-hour course within the last three years. This course will review accident prevention and provide new information on driving rules. Presented in cooperation with the Minnesota Safety Council.

FREE: Please register for class.

Limited spots available

Thurs., October 12, 8:00 a.m.-12:00 noon

Wilkin Co. Recycling Center Conference Room

505 8th St. S, Breckenridge



55+ Driver Discount Program Now Available Online For Community Education Programs!

WHAT: To ensure the health and well-being of our students and staff, the Minnesota Highway Safety and Research Center (MHSRC) is partnering with Community Education Programs to provide an on-line option for our 55+Driver Discount Program (55+DDP). We understand these times are stressful for many and people are being stretched financially. MHSRC is currently offering Online Classes for students to either renew their existing discount or start saving 10% off their automobile insurance – even while they are staying home. The cost of the 4 hr. refresher class is \$23.95 and the initial 8 hr. class is \$27.95.

WHERE: Log on with an Internet enabled device where there is a high speed connection. Visit www.mnsafetycenter.org for details. More material can be found under the 55+Driver Discount tab. Contact us at 1-888-234-1294 for further information.

WHEN: Students can take the course anytime that fits their schedule. After signing up for the course they will have 60 days to complete the material. Students can start and stop the course as many times as they require. Upon completion, students can simply download and save their certificate to email to their insurance carrier.

Minnesota Highway Safety & Research Center
www.mnsafetycenter.org 1-888-234-1294.



Register online today at
www.isd846.org

Follow Webstore link or mail
registration form and payment.



HEADWATERS DAY

September 9, 2023

9:00AM - 2:00PM

Breckenridge, MN

Breckenridge Community Event at Welles Memorial Park

2023 EVENTS Planned (so far):

- *Parade *5k *Rummage & Used Book Sale
- *Entertainment (Axe Throwing, Inflatables, etc.)
- *Vendor/Informational Booths *Much More

WANTED:

Vendors: Crafters, Artisans, Flea Market Sales, Distributors & Direct Sale Companies, Area Businesses, Non-Profit Organizations & Food Vendors
Sponsors: Monetary Donations and/or Volunteers

For more information & details visit:
www.breckenridgemn.net/headwaters-day



Where individuals grow, families connect,
and community thrives

6th Street North and Beede Avenue, Breckenridge

(218)643-1282 or City Hall (218)643-1431

- Open Weekdays After School with weekly & monthly activities
- Seasonal Weekend Warming House Hours
- Rent the Facility

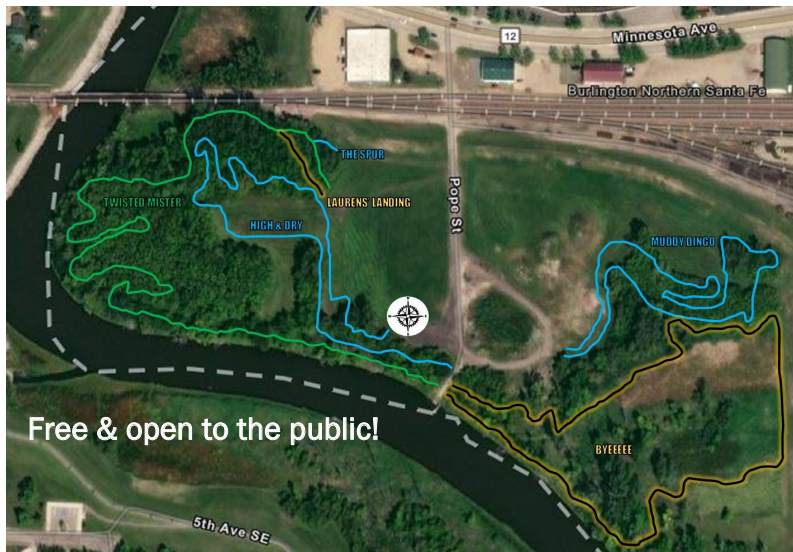
www.breckenridgemn.net/family-community-center

Facebook: www.facebook.com/breckenridgefcc

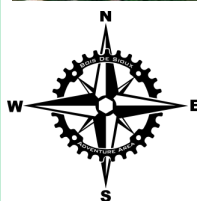
Instagram: @breckcommunitycenter

Bois de Sioux Adventure Area

Location: Pope Street, south of Favorites Deli off Minnesota Ave



Free & open to the public!



Bring your bike and ride, or just take a walk.

Year-round use for cross-country ski,
snow-shoe, walk/run, & bike.

Website: www.breckenridgemn.net/bois-de-sioux-adventure-area

Facebook (search): Bois de Sioux Adventure Area

Breckenridge Pickleball Courts 1400 Beede Ave



**FREE Paddle & Ball Rental available
at City Hall, 420 Nebraska Ave**

LOTS of Local Happenings in the Twin Towns visit www.breckenridgemn.net/local-happenings

Breckenridge's 9 Hole Frisbee Golf Course

at Welles Memorial Park 101 Nebraska Avenue

Q: What is Frisbee Golf?

A: It is a game in which a Frisbee is thrown into each of a series of metal baskets on an outdoor course, the object being to complete the course using the fewest possible throws.

FREE Disc sets Rental available at City Hall,
420 Nebraska Ave

FUN for ALL Ages!



BRECKENRIDGE PARKS

Oxcart Trail: 318 Wilkin Ave

Jefferson: 300 10th St S

Welles Memorial: 101 Nebraska Ave

Kid's Corner: 600 Chicago Ave

Aquatic Center: 520 13th St N

Twin Town Skatepark: 630 6th St N

For a full list of parks & details visit
www.breckenridgemn.net/parks



Welcome to Breckenridge ECFE!

Dear Families,

Welcome to a new school year of Early Childhood Family Education (ECFE). For those new to ECFE, we are a multigenerational program where parents and their children, birth to kindergarten entrance, come for weekly classes to learn and grow together. You are your child's first and most important teacher! ECFE classes support you in this essential role. ECFE classes are designed for you and your child and is unique to Minnesota and is a program of

the Breckenridge Public School's Community Education. Registration for ECFE classes is ongoing. You are welcome to join our classes anytime during the school year, space permitting. Residents from Breckenridge, Wahpeton and other communities are welcome!



Breckenridge ECFE

Early Childhood Family Education (ECFE) is a Breckenridge Area School District Community Education program that strengthens families with young children through education and support. ECFE provides parent-child interaction activities and parent education for families with children birth-5.



The components of most ECFE classes are:

Growing Together: For You and Your Child: Half of each class is devoted to activities planned by a licensed early childhood teacher for parents and children to explore together. Together you can enjoy learning through art, music, stories and a variety of developmental activities. It is an opportunity to learn new ideas, games and activities that you can do at home.

Growing Independently: For Your Child: The remaining portion of each class is for children to have fun learning through play using art, movement, games and stories with the licensed early childhood teacher, the classroom assistant and the other children. New friendships are formed and children discover aspects of "me" while they learn apart from you. The goal of the children's program is to develop a healthy self-concept and a joy of learning.

Growing Confidently - For You: While children take part in the children's program, parents join with other parents in an informal group setting for discussion time led by a licensed parent educator. Being a parent is enjoyable, complex, and at times, stressful. Parents have the opportunity to choose and discuss current family topics, share ideas and concerns and feel encouraged by the support of others.

Sliding Fees and Scholarships Available for Breckenridge School District Residents

- If your budget is too tight to allow for an ECFE class,
- call Molly at (218) 643-6822 to learn more about our
- sliding fee scale and scholarship program.

Location: Classes are held in the ECFE Center of the Breckenridge Elementary School unless otherwise indicated.

Class Fees: Class fees are indicated with each class description and are payable upon registration. When registering two children for the same ECFE class, pay half the fee for the second child aged one year and over for classes meeting more than one time. No family who resides in the district will be denied participation because of inability to pay.



Wilkin County ECI Dental Outreach Clinic

Dental care for Wilkin County children ages 1-12 who are served by Minnesota Care and Medical Assistance. Services include: check-up, cleaning, fluoride, and follow-up.

The clinic will be set up in the Elementary Conference Room at the Breckenridge Elementary School on:

Wed., September 26th & Thurs., September 27th

Appointments must be made in advance by calling 218-998-2218, Monday-Friday 8:30 a.m.-4:00 p.m.

Have We Got Everybody?

Are you new to the district? Have you moved? Do you have an addition to your family? If you have children birth to kindergarten in your household, be sure that all your children are included in the school census. Call 218-643-6822 to verify that your babies, toddlers & preschoolers are included on the school district census. This information helps our district plan for the future.

Fantastic Fall

Come join us for our fun filled fall ECFE sessions! There will be six sessions chalk full of fun themes with different crafts and activities for you and your child to explore. Young children learn through play and develop positive peer relationships. Grant your 0-5 year old the opportunity to play with new fantastic friends and toys. This class is also a great place for you as a parent to connect with other parents and share your experiences. During the separating portion of the class you will engage in stimulating conversations to discuss parenting tips and tricks along with other topics.

Separating class with Parent Ed offered

9:30-11:00 a.m.

Fri., October 6, 13, 27 & November 3, 10, 17

\$24 for the first child, \$12 for the second child, children under 1 are free!



You & Your Tot

Winter is a great time to come in from the cold and join your ECFE friends for some fun! All are welcome. Bring your dads, moms, grandparents, aunts/uncles, tots, and preschoolers to explore the many different adventures we have in store! Learning through play we will have toys, activities, and crafts to do at every session. The separating time is your chance to take a break and relax. This is also where you can share your joys and challenges as a parent with others who might be experiencing the same thing at home.

Separating class with Parent Ed offered

9:30-11:00 a.m.

Fri., January 5, 12, 19, 26 & February 2, 9

\$24 for the first child, \$12 for the second child, children under 1 are free!



Pumpkin Palooza

It is the spookiest month of the year! Come see all the pumpkins we have to offer. There will be painting, activities, and crafts. Celebrate with us at this one time event. A special snack will be provided at the end of the class. *There will be NO Parent Ed separating time. Appropriate for ages 2-5*

5:00-6:15 p.m.

Thurs., October 26

\$4 for the first child, \$2 for the second child



Grandparents Class

The well attended grandparents event is back! All grandmas and grandpas are encouraged to join us for this one time event. Come make some everlasting memories with your grandchild as they explore the sensory table, build with blocks, color, and craft with you to take home and hang on your fridge! At the end of the class we will have a special snack together. *There will be NO Parent Ed separating time. Appropriate for ages 0-5*

5:00-6:15 p.m.

Thurs., November 2

\$4 for the first child, \$2 for the second child

Tree Lighting Event

This year instead of hosting our traditional santa event, Breckenridge ECFE is happily participating in the Breckenridge Tree Lighting Event! Come see us to take pictures with Santa and get a treat after. There will also be a craft you can do there at the event or take home to do later. We hope to see you there!

5:00-6:15 p.m.

Mon., November 27

Free Public Event

Reindeer Surprise

With Christmas just right around the corner it's time to start decorating! Come join us at this one time special event to make magical reindeer food! Entice Santa's reindeer to visit and enjoy a quick snack with your delicious reindeer friendly treat. Spread the reindeer food out onto the snow in your yard on Christmas Eve. There will also be crafts to make and take to use as decorations. At the end of the event there will be a special snack. *There will be NO Parent Ed separating time. Appropriate for ages 2-5*

5:00-6:15 p.m.

Thurs., December 14

\$4 for the first child, \$2 for the second child



Snow Much Fun

With all the snow on the ground come inside out of the cold and explore the joys of snow in doors! This event will be sure to excite you and your 0-5 year old as they participate in snowy fun. There will be art projects and a chance to build a life size snowman. Be sure to bring a pair of gloves to enjoy the full snow much fun day. *There will be NO Parent Ed separating time. Appropriate for ages 0-5*

5:00-6:15 p.m.

Thurs., January 18

\$4 for the first child, \$2 for the second child

Bee My Valentine

Quick, it's almost Valentine's day! Come join us in making homemade valentines for someone special. Create a valentine unlike any other. There will be plenty of art supplies so let your imagination run wild, there is no limit to what you can do! At the end of the class there will be a special snack to enjoy. *There will be NO Parent Ed separating time. Appropriate for ages 2-5*

5:00-6:15 p.m.

Thurs., February 8

\$4 for the first child, \$2 for the second child



MONTHLY LIBRARY EVENTS:



BRECKENRIDGE PUBLIC LIBRARY

a branch of Lake Agassiz Regional Library

218-643-2113 • 205 7th St N • breckenridge@larl.org

Saturday Movie Morning

1st & 3rd Saturday at 11:30 a.m.

Join us at 11:30 a.m. for Saturday Movie Morning! We'll be having film screenings on the 1st and 3rd Saturday of each month at 11:30 a.m. You can find more details on what films we'll be showing at <https://larl.libnet.info/events>.

Anime & Manga Club

1st Friday from 4:00 - 5:00 p.m.

Join us on the first Friday of the month for Anime & Manga Club. Each month we discuss what everyone has been watching and reading, learn about new titles, enjoy snacks, and watch an anime episode.

*Recommended for ages 13-18.



Knittin' & More

1st Tuesday from 6:00 - 7:00 p.m.

Join us for a social hour of knitting and/or other crafting projects! Always wanted to learn how to knit or crochet? A local knitting expert will be at the library to teach the basics, give craft ideas, etc. Bring your supplies for a social hour of crafting. All skill levels are welcome!

Breck Book Club

3rd Tuesday from 6:00 - 7:00 p.m.

Join us on the third Tuesday of the month at 6:00 p.m. for the adult book club meeting! Come and discuss books you've recently read and share what you liked, or didn't like about it. Shhhhh....no spoilers! Give and get recommendations from others in the community!

WEEKLY LIBRARY EVENTS:

Storytime

Thursdays at 10:30 a.m.

Join us on Thursday mornings at 10:30 a.m. for an early literacy experience. Each week we have exciting new adventures with books, songs, flannel stories, crafts, and more!

For more information about library events visit larl.libnet.info/events





Registration Information



REGISTER EARLY

Register promptly using the registration forms provided. Class sizes are limited and many fill rapidly. Don't be disappointed – register early.

ARE YOU IN?

Yes—unless you hear from us. No class confirmations are sent.

INCLEMENT WEATHER

If Breckenridge schools are cancelled, Community Education classes are cancelled as well. Cancellations will be announced over the KBMW radio station and on the school's Facebook page.

CANCELLATION POLICY

If you have to cancel, we can give a full credit voucher or refund only if you notify the Community Education Office at least one day prior to the first class meeting. In the unlikely event your class is cancelled, we will give a full refund.

PAYMENT

Payment must accompany all registrations. Payment required to hold your spot in class. Supply fees to be paid the first night of class to the instructor.

LOCATIONS

BHS - Breckenridge High School, 710 N. 13th St.

Park on west side and enter through main doors.

BES - Elementary School, 810 Beede Ave.

Park on south side and enter through main doors. (#2)

ECFE - Elementary School, 810 Beede Ave.

Park on south side and enter through main doors. (#2)

ONLINE - Prior to the class a link will be sent to your email to access the class.

OTHER - Some classes or events may be located outside of Breckenridge Public Schools. Please see information regarding the class to verify location.



Easy Ways to Register!

ONLINE: Go to www.isd846.org to select classes for Mastercard, Visa or Discover payment

PHONE: 218-643-6822. Phone in your registration using Mastercard, Visa or Discover. Have credit card number and expiration date ready when you call.

MAIL: Send registration form & payment to:
Community Education
710 13th St N, Breckenridge, MN 56520

IN PERSON: Bring registration to Courtney in the High School main office between the hours of 8 a.m. and 4 p.m.

TENNESSEAN WARNING

The information requested in this catalog is for registration purposes. It's intended use is to assist the instructor in knowing who is in the class. You are not legally obligated to supply data. However, failure to do so could result in a course cancellation. Only the CE staff and the course instructor are authorized to access this information.



Registration Form



It's Easy To Register!

Name: _____

Address: _____

City, State, Zip: _____

Email: _____

Phone (day): _____

Phone (evening): _____

Cell: _____

Course Title

1. _____
2. _____
3. _____
4. _____
5. _____
6. _____

Fill in for ECFE Classes

Child's name _____ Date of birth _____

Child's name _____ Date of birth _____

*Supply fee is payable to the instructor the first night of class.
Submit a check payable to Breckenridge Community Education for class fees.*



On-line registration at:
www.isd846.org





OSPTI Classes



ORTHOPEDIC & SPORTS
PHYSICAL THERAPY INC.

For more information check out our
website for wellness activities at:

www.ospti.net

Find us on Facebook: OSPTI



International Bike, Walk, and Roll to School Day – “The Ultimate School Challenge”

Join Kids across America as they walk, bike or roll to school for International Bike Walk and Roll to School Day. Participating schools include: Breckenridge Elementary, St. Mary's, St. John's, Wahpeton Elementary/Middle, and Hankinson to see who has the highest percentage of kids that walk bike or roll to school. There will be OSPTI staff members outside each school from 7:45-8:30 am tallying how many students participate. Participants will receive a sticker and get registered for prizes.

Wed., October 4, 2023, 7:45–8:30 a.m.

*Sponsored By: OSPTI and Partnership 4 Health Watch
for flyers sent home with students prior to the date*



Swimming Lessons

Swimming Lessons will be returning this Fall in October/November. Follow on our OSPTI Facebook page or contact OSPTI at 218-641-7725 to be placed on the waiting list.

OSPTI Water Aerobics

Water aerobics offers increased resistance for your muscles while decreasing strain on your joints. The class is a combination of cardiovascular exercise and strengthening. Pool temperature is a balmy 92 degrees.

Wed. & Fri. 8:15-9:00 a.m.

Mon. & Thurs. 10:15-11:00 a.m.

Tue. & Thurs. 5:15-6:00 p.m.

Classes run continuously each month.

Gym/Pool membership is \$30.00 a month with an additional \$10.00 a month to attend water aerobics classes. Otherwise you can purchase a 10-session punch card for \$50.00 to use (limit one punch for each class). Insurance reimbursement options available with memberships.

Location: OSPTI 430 5th St N Breckenridge
Call 218-641-7725 with any questions or stop by for a class!



Exercise Training Program

Join the OSPTI specialists in the fields of physical therapy, personal training, athletic training, and group exercise specialists for a training program to help accommodate you in achieving your exercise goals. Training sessions are tailored to youth, adults, athletes, and non-athletes.

**Please call OSPTI for available Adult & Youth Classes and Personal Training times*

Location: OSPTI, 430 5th St N, Breckenridge
Call OSPTI to register or if you have questions at 218-641-7725



GREENQUIST ACADEMY

Regional Headquarters

Greenquist Academy is a Changmookwan & Kukkiwon registered & certified Taekwondo school under the direction of 9th degree Grand Master Eric Greenquist & 7th degree Grand Master Celeste Greenquist

TINY TYKES ages 4-5

Fall Session: Tues. Sept. 5th - Oct. 10th
4:15-4:45 PM

Winter Session: Thurs. Jan 4th - Feb 1st
** Limited availability, call to reserve**

CHILDREN ages 6-8

New Students: Mon 6:30-7:00 PM
Colored Belts: Tues/Thurs 5:00-5:30 PM

JUNIORS ages 9-13

Tues/Thurs 5:45 - 6:30 PM

TEENS/ADULTS ages 14+

Tues/Thurs 6:45 - 7:30 PM



Our Association Mission

To provide the best martial arts education & internationally recognized certification possible, individualized to personal ability - without prejudice - in order to develop the mind, body, & character of our students in the "Total Martial Arts Way."

Contact for More Info

Master Morgan Olson - 5th Dan



(701) 308 - 1322



502 Minnesota Ave
Breckenridge, MN 56520



morgan.lee.olson@gmail.com



Fall Registration Night

Tuesday, September 5th

(times as listed above)

**Classes fill quickly...Call to
reserve your spot today!**



From the desk of Superintendent Sullivan...

By Kristie Sullivan, Breckenridge Schools Superintendent

Hello, and welcome to the 2023-2024 school year. I hope this greeting finds you well. This school year brings several changes to our schools, and we are excited to enhance and expand opportunities for our students and families.

Corinna Erickson will serve as our K-12 Principal this year, and Jordan Christensen will be our Dean of Students. Noah Brenden will also join our team as High School Counselor. Together with Miriam Tobola, Director of Learning and Innovation, this team has been working diligently to prepare for a great school year and will bring a renewed focus on the student experience and academic achievement.

Our School Board participated in a number of work sessions over the summer months to celebrate progress and achievement and to identify challenges in our district. Their work helped to bring focus to prioritized needs for both short- and long-term strategic planning. The Board engaged in rich discussions and generated common belief statements to guide decision-making:

We believe:

- all students, given proper support, curriculum, and instruction, can learn and achieve at high levels.
- learning is an essential, innate, ongoing, and lifelong process.



- both self-perception and educator expectations directly affect motivation and learning.

- learning is most effective when information is embedded in purposeful and meaningful experiences and interactions.

- it is essential that learners can apply understandings in new situations in flexible and thought-provoking ways.

- a safe, welcoming, and affirming school environment is core to student success.

- all staff deserve high quality mentoring, training, and resources to be the best models demonstrating lifelong learning, development, and achievement for students.

- all students deserve access to high quality instruction and programming

in which numerous perspectives are studied and shared.

- in clear, open communication and responsive leadership.

- in the responsible stewardship of resources.

- families and community are equal partners in our education system and that **our children are our future.**

At Breckenridge Schools, these beliefs are our WHY; they are the essence of all we do to serve our students, stakeholders, and community.

We are privileged and honored to serve your children this year, and we are excited to welcome them back through our doors in September.

SCHOOL INFORMATION

Superintendent – Kristie Sullivan

School Board Members

Chair Brett Johnson
 Vice Chair Steve Arnhalt
 Treasurer Justin Neppi
 Clerk Marc Hasbargen
 Directors Clayton Ernst, Ty Mikkelsen, Shawn Roberts
 Agendas/Minutes www.isd846.org

Located under: District Information

Staff

K-12 Principal Corinna Erickson
 Dean of Students Jordan Christensen
 Business Manager Dessica Komestakes
 Activities Director/Transportation Chad Fredericksen
 Facilities Manager Jerry Rosenthal
 Technology Miriam Tobola, Tom Thielen
 Food Service Director Steph Beyer
 Youth Program Director Julie Ernst
 Early Childhood Coordinator Molly Olson
 Community Education Coordinator Courtney Diestler

Fall Activities Practices Start

High School & Junior High Monday, August 14
 Junior High Football Monday, August 28

Coaches

| | |
|---------------------------|--------------------|
| Varsity Football | Carson Yaggie |
| Assistant | Jordan Christensen |
| B Squad Football | Josh Nordick |
| | Michael McCall |
| Varsity Volunteer | Joel Herder |
| Junior High Football | Noah Brendan |
| | Eric Erlandson |
| | Bruce Yaggie |
| Junior High Volunteer | Margaret Wilson |
| Varsity Volleyball | Alicia Finkral |
| Junior Varsity Volleyball | Missy Johnson |
| B Squad Volleyball | Briana Dauer |
| 9th Grade Volleyball | Sierra Hansey |
| Junior High Volleyball | Larry Lasch |
| Cross Country | Christy Haire |



Back to School News



From the desk of K-12 Principal Erickson...

By Mrs. Corinna Erickson, K-12 Principal, Breckenridge Schools

Dear Breckenridge Families,

Welcome back to the 2023-24 school year! Custodial staff, administration and classroom teachers are all busy preparing for a great school year. I hope everyone had a fantastic summer filled with sunshine and lots of fun all mixed in with some rest and relaxation.

After a busy but exciting summer of planning with our redesigned administrative team, we are thrilled to offer great opportunities to all our PreK through 12th grade students this coming school year. Breckenridge Schools is a great place to learn and grow. Together with our dedicated staff, we will strive to make connections with students to help them feel valued, accepted, and safe. We are looking forward to providing a rigorous and meaningful social, emotional and educational experience for all our students. Our overall goal is to encourage active student engagement to foster a lifetime love for learning so when our students leave our buildings, they find success and joy in the lives they lead as citizens of a broader community locally and globally.

Partnering with families is crucial to promote a healthy school experience for students socially, emotionally and educationally. We will continue to work towards building a healthy and successful school community with all our stakeholders.

Read on for more information and other important announcements as we begin the school year:

➤ Elementary Open House Conferences:

• Sept. 5th (11:30 a.m. - 6:15 p.m. AND Sept. 6th (8:00 a.m. - 3:45 p.m.) - Individual family conferences scheduled through ParentVue with your child's classroom teacher starting on August 14th. Please contact your child's teacher if alternative arrangements need to be made. **Fun Club will be available. Please contact Dee Nelson for details at 218-643-6681, ext. 4010.** Individual student fall assessments in reading and math, hearing/vision screenings, fall pictures and other items will also be taken care of on this day. If all goes as planned, please plan for 1 ½ hours of time needed to complete all the stops in the building.

• Students can leave their school supplies in their classroom.

• Keep in mind that elementary students will not start their regular school/classroom schedule until September 7th! This will be the first day we have all elementary students on campus.



➤ 7-12 Open House Events - all held in the high school auditorium:

Aug. 14 - 12th Grade - 5:30 p.m., 11th Grade - 7:00 p.m.

Aug. 15 - 9th Grade - 5:30 p.m., 10th Grade - 7:00 p.m.

Aug. 22 - 7th Grade 5:30 p.m., 8th Grade 7:00 p.m.

➤ New Educators in the district:

New faces in the elementary building include:

• **Mr. Jordan Christiansen** as our new K-12 Dean of Students

• **Mr. Noah Brendan** as our new High School Counselor

• **Ms. Jessica Erickson** as our new High School Social Studies Teacher

• **Ms. Kori Bommersbach** and **Mr. Josh Nordick** as our new High School Science Teacher

• **Mr. Nicholas Johnson** as our new 5-12 Choir Teacher

• **Ms. Cassey Wittenberg** as our new 3rd Grade Teacher

• **Ms. Breann Ophoven** as our new Kindergarten Teacher

➤ New Adventures in Reading:

• Classroom reading teachers are excited to be using a new curriculum this year in grades K-4! We are excited to make an even greater impact on our growing readers this year. For an even greater impact, make sure you sit down and share a book(s) with your child every night for 20 minutes!

➤ School Lunches:

• School lunches are free for all students this year, BUT...We still need you to complete the Free/Reduced lunch form for your family. This is very important as other funding from the state/federal government and

.....

Breckenridge Schools

Flexible Learning Day Plan

• The Flexible Learning Day Plan outlines the plan for inclement weather days and can be found on the school website under District Information > Public Notices.

.....

Help our school receive additional funding!

Fill out a food service Application for Educational Benefits to help our school receive additional funding just by filling out the information. Find more information on page 22 of this brochure.



Back to School News



Continued from the desk of K-12 Principal Erickson...

grants depend on the number of families that are eligible under those guidelines.

- Contact either office for details on the lunch application. Filling out the online version is encouraged!

➔ **Elementary class assignments will be posted by 3:00 p.m. on Friday, August 11, 2023 on ParentVue at https://rt1.region1.k12.mn.us/rt0846/PXP2_Login.aspx**

- If you have any questions or don't have a login please contact Peggy in the office 218-643-6681.

➔ **Headwater's Day Parade**

- **3rd through 6th grade students** are invited to participate in the Headwater's Day parade by walking the route and handing out pencils on **Sept. 9**. Watch for a detailed letter going home with 3-6th grade students the first week of school.

I am looking forward to a great school year filled with lots of new and exciting learning opportunities for all our students! Please feel free to contact me anytime with any questions or concerns. I can be reached at (218)643-6681, ext. 4020 (Elem) or 4004 (HS), or ericksonc@isd846.org.

Back to School Schedule

| | | |
|-------------|------------|-----------|
| High School | Start Time | 8:30 a.m. |
| | Dismissal | 3:23 p.m. |
| Elementary | Start Time | 8:30 a.m. |
| | Dismissal | 3:15 p.m. |

Review, update info on ParentVUE

Please review student and family information on the ParentVUE on the school website at www.isd846.org and update information as needed. Please contact the Elementary School office or High School office if you have questions or need help logging on.

Breckenridge Schools Offers Online Payment through SchoolPay

SchoolPay is a payment service that is integrated with Synergy ParentVUE that allows families to pay for items such as registration fees, food service, athletic fees, and donations online at your convenience. With SchoolPay, there is no need for cash, or sending money with students. Pay online from anywhere, at anytime, on any device via Visa, MasterCard, Discover or electronic check.

Flexible Learning Day Plan

The Flexible Learning Day Plan outlines the plan for inclement weather days and can be found on the school website under District Office > Public Notices.

Check out our Website

A wealth of information can be found on the school website from the latest happenings at school, student handbooks, individual teacher communications, calendar, webstore, and lunch menus. Forms necessary for your child for back-to-school can also be found on the website: www.isd846.org

School Census Information

It is important for the district to have accurate numbers, especially for all children birth to age 5. We are currently registering all children for the school census. To register, call the District Office at 218-643-6822

Like us on Facebook!

Check out the school's Facebook page for the latest happenings.

From the desk of Dean of Students Christensen...

By Jordan Christensen,

K-12 Dean of Students, Breckenridge Schools

Dear Breckenridge Community Members,

The 2023-2024 school year is right around the corner. After teaching in Studio 6 for the last four years, I will be stepping out of the classroom this year to help students in a different way. I am beyond excited to begin the new school year as the Dean of Students. This letter will hopefully answer any questions you may have regarding my new role.

My main focus as Dean of Students will be student discipline. I will be working in both the elementary and high school buildings to help with behavior issues. To begin the year, Mrs. Erikson and I will be rotating between the two buildings, with one of us in each building at a time. If I am at the elementary school for the day, Mrs. Erikson will be at the high school and vice versa. My other duties as Dean of Students will

include: attending IEP meetings, monitoring the halls, supervising lunch, and assisting Mrs. Erickson with whatever she needs.



This year we will be implementing new procedures in both buildings to help with behavior management. At the high school, we will be using an electronic hall pass system to limit unnecessary hallway traffic during class time. With this system, we will be able to monitor the hallways and cut down on unwanted incidents in the hallways/bathrooms. At the elementary school, we will begin implementing Positive Behavioral Interventions and Supports (PBIS). PBIS is a behavioral management system with universal language and standards that will help both teachers and students.

I can't wait to see all of the students on the first day of school! If you have further questions, please feel free to reach out to me at christensenj@isd846.org. Go Cowboys and Cowgirls!



Back to School News



Breckenridge Public Schools
"Home of the Cowboys & Cowgirls"
INDEPENDENT SCHOOL DISTRICT #846 - DISTRICT OFFICE
 810 Beede Avenue - Breckenridge, MN 56520
 Phone: 218-643-6822 - Fax: 218-641-4035
www.isd846.org

Dear Parent/Guardian:

Our school offers healthy meals each day. Starting school year 2023-24, we are joining Minnesota's Free School Meals Program. All students can get one breakfast and one lunch free of charge each day at school. Although no application is required to receive this free meal benefit, filling out the Application for Educational Benefits is still important! Your child(ren) may qualify for other benefits like reduced fees at school. Your application may also help the school qualify for education funds, discounts, and other meal programs.

To apply, complete the enclosed Application for Educational Benefits and return it to:
 Breckenridge Public Schools, Attn: Elementary Office, 810 Beede Avenue, Breckenridge, MN 56520

Who should complete this application? Children in households participating in the Supplemental Nutrition Assistance Program (SNAP), Minnesota Family Investment Program (MFIP) or Food Distribution Program on Indian Reservations (FDPIR), and foster, homeless, migrant and runaway children qualify without reporting household income. Alternatively, children can qualify if their household income is within the maximum income shown for their household size on the instructions.

COMMON QUESTIONS:

I get WIC or Medical Assistance. Can my children qualify? Children in households participating in WIC or Medical Assistance do not automatically qualify. Children may be eligible depending on other household financial information. Please fill out an application.

Who should I include as household members? Include yourself and all other people living in the household, related or not (such as grandparents, other relatives, or friends).

May I apply if someone in my household is not a U.S. citizen? Yes. You or your children do not have to be U.S. citizens for you to complete an application.

What if my income is not always the same? List the amount that you normally get. If you normally get overtime, include it, but not if you get overtime only sometimes. For seasonal work, write in the total annual income.

Will the income information or case number I give be checked? It may be. We may also ask you to send written proof.

How will the information be kept? Information you provide on the form, and your child's approval, will be protected as private data. For more information, see the back page of the Application for Educational Benefits.

If I don't qualify now, may I apply later? Yes. Please complete an application at any time if your income goes down, your household size goes up, or you start getting SNAP, MFIP or FDPIR benefits.

If you have other questions or need help, call 218-643-6682.

Sincerely,

Kristie Sullivan

Kristie Sullivan, Superintendent

"SERVING THE EDUCATIONAL NEEDS OF STUDENTS FROM BRECKENRIDGE, BRUSHVALE, DORAN, EVERDELL, FOXHOME, MCCAULEYVILLE, KENT AND WOLFE"
 Breckenridge Public School #846 does not discriminate on the basis of race, color, national origin, sex

Does your family qualify for free or reduced lunch?

Check out a way to help your family with free lunch and our school with additional funding ... by filling out an application to see if you qualify for free lunch. The online application is an easy, secure and convenient way to apply for healthy school meals and can be found at: www.LunchApplication.com Apply today! If you prefer to fill out a paper copy of the Application for Educational Benefits, it can be picked up at the Elementary School Office or High School Office or printed from the school website.

BRECKENRIDGE SCHOOLS CONTACT INFORMATION

810 Beede Avenue
 Breckenridge, MN 56520
 Elementary 218-643-6681
 High School 218-643-2694
 District Office 218-643-6822

Does your child have health insurance?

If not, help may be available

Minnesota Health Care Programs have free and low-cost health insurance for children and families who qualify.

Your child may qualify if your household income is below:

| Family Size | Monthly income | Yearly income |
|-------------|----------------|---------------|
| 2 | \$4,519 | \$54,230 |
| 3 | \$5,697 | \$68,365 |
| 4 | \$6,875 | \$82,500 |
| 5 | \$8,052 | \$96,635 |

Income is one factor for qualifying. Other rules and limits apply. For more information, call your county office or visit <http://mn.gov/dhs/people-we-serve/adults/health-care/>. The income limits above are valid until June 30, 2023. To get a MNsure application for health coverage and help paying the costs (DHS-6696):

- Print one from <http://mn.gov/dhs/people-we-serve/adults/health-care/>
- Call 877-KIDS-NOW toll free
- Call Wilkin County Family Service Agency (218) 643-7161



How to Complete the Application for Educational Benefits

- Complete the Application for Educational Benefits form for school year 2023-24 if any of the following applies to your household:
- Any household member currently participates in the Minnesota Family Investment Program (MFIP), or the Supplemental Nutrition Assistance Program (SNAP), or the Food Distribution Program on Indian Reservations (FDPIR) or
 - The household includes one or more foster children (a welfare agency or court has legal responsibility for the child) or
 - The total income of household members is within the guidelines shown below (gross earnings before deductions, not take-home pay). Do not include as income: foster care payments, federal education benefits, MFIP payments, or value of assistance received from SNAP, WIC, or FDPIR. Military: Do not include combat pay or assistance from the Military Privatized Housing Initiative. The income guidelines are effective from July 1, 2023 through June 30, 2024.

| Household size | \$ Per Year | \$ Per Month | \$ Twice Per Month | \$ Per 2 Weeks | \$ Per Week |
|--------------------------------|-------------|--------------|--------------------|----------------|-------------|
| 1 | 26,973 | 2,248 | 1,124 | 1,038 | 519 |
| 2 | 36,482 | 3,041 | 1,521 | 1,404 | 702 |
| 3 | 45,991 | 3,833 | 1,917 | 1,769 | 885 |
| 4 | 55,500 | 4,625 | 2,313 | 2,135 | 1,068 |
| 5 | 65,009 | 5,418 | 2,709 | 2,501 | 1,251 |
| 6 | 74,518 | 6,210 | 3,105 | 2,867 | 1,434 |
| 7 | 84,027 | 7,003 | 3,502 | 3,232 | 1,616 |
| 8 | 93,536 | 7,795 | 3,898 | 3,598 | 1,799 |
| Add for each additional person | 9,509 | 793 | 397 | 366 | 183 |

Step 1: Children

List all infants and children in the household, their school and grade if applicable, and birthdate. Attach an additional page if needed to list all children. Check the box if a child is in foster care (a welfare agency or court has legal responsibility for the child).

Step 2: Case Number

If any household member currently participates in SNAP, MFIP or FDPIR, write in the case number and then go to Step 4. If you do not participate in any of these programs, leave Step 2 blank and continue on to Step 3.

Step 3: Adult and Child Income / Last 4 Digits of Social Security Number

- **Social Security Number/Total Household Members.** An adult household member must provide the last four digits of their Social Security number or check the box if they do not have a Social Security number. Report the total number of household members and ensure all household members are listed individually on the application in the child or adult section as applicable.
- **Child Income.** If any children in the household have regular income, such as SSI or part-time jobs, list the total amount of regular income received by all children, and check the box for the frequency: weekly, bi-weekly, twice a month, or monthly. Do not include occasional earnings like babysitting or lawn mowing.
- **Adult Income.** Report the names of adult household members and income earned in this section.
 - o List all adults living in the household not listed in Step 1, whether related or not, such as grandparents, relatives, or friends.
 - o **Gross Earnings from Work.** This is usually the money received from working at jobs where a paycheck is received. For each income, check the box to show how often the income is received: weekly, bi-weekly, twice per month, or monthly.
 - o List gross incomes before deductions, not take-home pay. Do not list an hourly wage rate. For adults with no income to report, enter a "0" or leave the section blank. For seasonal work, write in the total annual income.
 - o **Are you Self-Employed or a Farmer?** List the net income per month or year after business expenses. Do not list the same income twice on the application. A loss from farm or self-employment must be listed as 0 income and does not reduce other income.
 - o **Any Other Gross Income.** List gross incomes before deductions from all other sources, such as SSI, unemployment, child support, public assistance, social security, rental income or annuities.

Step 4: Signature and Contact Information An adult household member must sign the form. If you do not want your information to be shared with Minnesota Health Care Programs, check the "Don't share" box in Step 4.

Optional: Please provide the information on ethnicity and race that is requested on the second page of the form. This information is not required and does not affect approval for school meal benefits. The information helps to ensure we are meeting civil rights requirements and fully serving our community.



BRECKENRIDGE PUBLIC SCHOOL ISD #846 ANNUAL PUBLIC NOTICE

Indoor Air Quality

The Breckenridge Public school district has written indoor air quality (IAQ) management plan that describes our on-going effort to monitor and improve the air quality in our buildings. James Grawe is our IAQ coordinator, responsible for seeing that the management plan is implemented to prevent as many IAQ problems as possible and to quickly respond to any IAQ problems that may arise. The plan is available to the public during normal school hours. If you have any questions or concerns regarding indoor air quality, please contact Jim Grawe at 218-643-6822.

Asbestos Notification

In accordance with federal regulations, the Breckenridge Public Schools have a management plan documenting the location and condition of all known or assumed asbestos containing materials (ACM) in the buildings. Every six months, an accredited inspector visually inspects the condition of the ACM. Also, every three years a re-inspection of the ACM is completed where all ACM is inspected, measured, and verified on maps with their locations. A six-month surveillance was completed on 7-24-2023 by an accredited inspector and management planner from Lakes Country Service Cooperative. The management plan is available for public inspection at the school office during normal business hours. Jerry Rosenthal is the designated person responsible for maintaining the asbestos management plans for the district. Jerry Rosenthal can be reached at 218-643-6822 with any questions.

Notice of Pesticide Use

A Minnesota state law went into effect in year 2000 that requires schools to inform parents and guardians if they apply certain pesticides on school property. Specifically, this law requires schools that apply these pesticides to maintain an estimated schedule of pesticide applications and to make the schedule available to parents and guardians for review or copying. State law also requires that you be told that the long-term health effects on children from the application of such pesticides or the class of chemicals to which they belong may not be fully understood. An estimated schedule of pesticides is available at the Administration Office. Parents of students may request to receive, at their expense, prior notification of pesticide applications made on days other than those specified in the estimated schedule (excluding emergency applications). Contact Jerry Rosenthal at 218-643-6822 with any questions.

Lead in Water

The Breckenridge School District will follow the recommendations of the Minnesota Department of Health's "Lead Contamination Control in School Drinking Water Guidance Manual." The Breckenridge School District completed lead in water testing during the 2022-2023 school year. The results of testing are available upon request. Re-testing will be completed during the 2023-2024 school year.

Policy 404 Employment & Services Criminal History Background Checks - Notice to Parents/Guardians

The school district has adopted a policy, the purpose of which is to promote the physical, social, and psychological well-being of its students.

Pursuant to this policy, the school district shall seek criminal history background checks for all applicants who receive an offer of employment with the school district. The school district also shall seek criminal history background checks for all individuals, except enrolled student volunteers, who are offered the opportunity to provide athletic coaching services or other extracurricular academic coaching services to the school district, regardless of whether compensation is paid. These positions include, but are not limited to, all athletic coaches, extracurricular academic coaches, assistants, advisors and overnight chaperones. The school district may elect to seek criminal history background checks for other volunteers, independent contractors, and student employees.

Policy 413 Harassment and Violence

The purpose of this policy is to maintain a learning and working environment that is free from harassment and violence on the basis of race, color, creed, religion, national origin, sex, age, marital status, familial status, status with regard to public assistance, sexual orientation, or disability.

Policy 514 Bullying Prohibition Policy

A safe and civil environment is needed for students to learn and attain high academic standards and to promote healthy human relationships. Bullying, like other violent or disruptive behavior, is conduct that interferes with a student's ability to learn and/or a teacher's ability to educate students in a safe environment. The school district cannot monitor the activities of students at all times and eliminate all incidents of bullying between students, particularly when students are not under the direct supervision of school personnel. However, to the extent such conduct affects the educational environment of the school district and the rights and welfare of its students and is within the control of the school district in its normal operations, the school district intends to prevent bullying and to take action to investigate, respond to, and to remediate and discipline for those acts of bullying which have not been successfully prevented. The purpose of this policy is to assist the school district in its goal of preventing and responding to acts of bullying, intimidation, violence, reprisal, retaliation, and other similar disruptive and detrimental behavior. This policy meets the requirements of the 2014 bullying and safe schools act.

Policy 534 Unpaid Meal Charges

The purpose of this policy is to ensure that students receive healthy and nutritious meals through the school district's nutrition program. When a student's meal account reaches zero, a student may not charge further meals or a la carte items until the account has sufficient funds. The school district will make reasonable efforts to communicate with families to resolve the matter of meal account balances that are low or fall below zero. The school district may provide an alternate meal that meets federal and state requirements to a student who does not have sufficient funds in the student's account or cannot pay cash for a meal. Families will be notified of a low balance once the balance reaches \$20.00. Negative balances of -\$20.00 may be turned over for collection. Policies are available for review at the District Office.



Back to School News



BRECKENRIDGE PUBLIC SCHOOLS ---- 2023/2024 CALENDAR

School Board Approved 2/16/2023

| Jul-23 | | | | | | | STU | Dates | Event | TCH | Jan-24 | | | | | | | | | | | |
|--------|----|----|----|----|----|----|-----|---|-------|---|--------|--------|----|----|----|----|----|-----|--------------------------|--|--|--|
| S | M | T | W | Th | F | S | | Aug | 29 | Teacher Workshop Days (Aug 29, 30, 31) | 3 | S | M | T | W | Th | F | S | | | | |
| | | | | | | 1 | 19 | Sep | 1 | Teacher Flex Day (Aug 1-Sep 1) | 20 | 31 | 1 | 2 | 3 | 4 | 5 | 6 | | | | |
| 2 | 3 | 4 | 5 | 6 | 7 | 8 | | | 4 | Labor Day | | 7 | 8 | 9 | 10 | 11 | 12 | 13 | | | | |
| 9 | 10 | 11 | 12 | 13 | 14 | 15 | | | 5 | First Day of School | | 14 | 15 | 16 | 17 | 18 | 19 | 20 | | | | |
| 16 | 17 | 18 | 19 | 20 | 21 | 22 | | | 20 | PLCs / Early Dismissal | | 21 | 22 | 23 | 24 | 25 | 26 | 27 | | | | |
| 23 | 24 | 25 | 26 | 27 | 28 | 29 | 20 | Oct | 11 | PLCs / Early Dismissal | 20 | 28 | 29 | 30 | 31 | | | | | | | |
| Aug-23 | | | | | | | | | 19 | Ed MN Break (Oct 19-20) | | Feb-24 | | | | | | | | | | |
| S | M | T | W | Th | F | S | | | 23 | PT Conf / HS Gr 7-12/5:00-8:30 | | S | M | T | W | Th | F | S | | | | |
| 30 | 31 | 1 | 2 | 3 | 4 | 5 | 18 | Nov | 3 | End of Quarter 1 (42) | 20 | | | | | 1 | 2 | 3 | | | | |
| 6 | 7 | 8 | 9 | 10 | 11 | 12 | | | 6 | 1/2 Prof Dev/1/2 Work Day-No Students | | 4 | 5 | 6 | 7 | 8 | 9 | 10 | | | | |
| 13 | 14 | 15 | 16 | 17 | 18 | 19 | | | 9 | PT Conf/EMS K-6/1:45-7:15/Early Dismiss | | 11 | 12 | 13 | 14 | 15 | 16 | 17 | | | | |
| 20 | 21 | 22 | 23 | 24 | 25 | 26 | | | 13 | PT Conf / EMS K-6/3:45-7:15 | | 18 | 19 | 20 | 21 | 22 | 23 | 24 | | | | |
| 27 | 28 | 29 | 30 | 31 | | | | | 15 | PLCs / Early Dismissal | | 25 | 26 | 27 | 28 | 29 | | | | | | |
| | | | | | | | | | 22 | Teacher Comp Day-No Students/No Staff | | | | | | | | | | | | |
| | | | | | | | | | 23 | Thanksgiving Break (Nov 23-24) | | | | | | | | | | | | |
| Sep-23 | | | | | | | | | 13 | PLCs / Early Dismissal | 15 | Mar-24 | | | | | | | | | | |
| S | M | T | W | Th | F | S | 15 | Dec | 22 | Christmas Break (Dec 22-Jan 1) | | S | M | T | W | Th | F | S | | | | |
| | | | | | 1 | 2 | | | | | | | | | | | 1 | 2 | | | | |
| 3 | 4 | 5 | 6 | 7 | 8 | 9 | 20 | Jan | 1 | New Year's Holiday | 22 | 3 | 4 | 5 | 6 | 7 | 8 | 9 | | | | |
| 10 | 11 | 12 | 13 | 14 | 15 | 16 | | | 2 | School Resumes | | 10 | 11 | 12 | 13 | 14 | 15 | 16 | | | | |
| 17 | 18 | 19 | 20 | 21 | 22 | 23 | | | 8 | Student Showcase @ HS Gr 5-12/5:00-8:30 | | 17 | 18 | 19 | 20 | 21 | 22 | 23 | | | | |
| 24 | 25 | 26 | 27 | 28 | 29 | 30 | | | 10 | PLCs / Early Dismissal | | 24 | 25 | 26 | 27 | 28 | 29 | 30 | | | | |
| | | | | | | | | | 15 | Staff Development Day-No Students | | | | | | | | | | | | |
| Oct-23 | | | | | | | | | 19 | End of Quarter 2 (45)/Semester 1 (87) | | Apr-24 | | | | | | | | | | |
| S | M | T | W | Th | F | S | | | 22 | Teacher Work Day - No Students | | S | M | T | W | Th | F | S | | | | |
| 1 | 2 | 3 | 4 | 5 | 6 | 7 | | | | | | 31 | 1 | 2 | 3 | 4 | 5 | 6 | | | | |
| 8 | 9 | 10 | 11 | 12 | 13 | 14 | 19 | Feb | 7 | PLCs / Early Dismissal | 19 | 7 | 8 | 9 | 10 | 11 | 12 | 13 | | | | |
| 15 | 16 | 17 | 18 | 19 | 20 | 21 | | | 16 | No School/Spring Break | | 14 | 15 | 16 | 17 | 18 | 19 | 20 | | | | |
| 22 | 23 | 24 | 25 | 26 | 27 | 28 | | | 19 | President's Day | | 21 | 22 | 23 | 24 | 25 | 26 | 27 | | | | |
| 29 | 30 | 31 | | | | | | | 26 | PT Conf / HS Gr 7-12/5:00-8:30 | | 28 | 29 | 30 | | | | | | | | |
| | | | | | | | | | 29 | PT Conf/EMS K-4/1:45-7:15/Early Dismissal | | | | | | | | | | | | |
| Nov-23 | | | | | | | | | 4 | PT Conf / EMS K-4/3:45-7:15 | 20 | May-24 | | | | | | | | | | |
| S | M | T | W | Th | F | S | 19 | Mar | 13 | PLCs / Early Dismissal | | S | M | T | W | Th | F | S | | | | |
| | | | 1 | 2 | 3 | 4 | | | | | | | | | 1 | 2 | 3 | 4 | | | | |
| 5 | 6 | 7 | 8 | 9 | 10 | 11 | | | 22 | End of Quarter 3 (41) | | 5 | 6 | 7 | 8 | 9 | 10 | 11 | | | | |
| 12 | 13 | 14 | 15 | 16 | 17 | 18 | | | 25 | Teacher Work Day - No Students | | 12 | 13 | 14 | 15 | 16 | 17 | 18 | | | | |
| 19 | 20 | 21 | 22 | 23 | 24 | 25 | | | 29 | Easter Break | | 19 | 20 | 21 | 22 | 23 | 24 | 25 | | | | |
| 26 | 27 | 28 | 29 | 30 | | | 21 | Apr | 1 | Teacher Comp Day-No Students/ No Staff | 22 | 26 | 27 | 28 | 29 | 30 | 31 | | | | | |
| | | | | | | | | | 17 | PLCs / Early Dismissal | | | | | | | | | | | | |
| Dec-23 | | | | | | | | | 13 | Student Showcase @ HS Gr 5-12/5:00-8:30 | 21 | Jun-24 | | | | | | | | | | |
| S | M | T | W | Th | F | S | 21 | May | 27 | Memorial Day Holiday | | S | M | T | W | Th | F | S | | | | |
| | | | | | 1 | 2 | | | | | | | | | | | | 1 | | | | |
| 3 | 4 | 5 | 6 | 7 | 8 | 9 | | | 30 | End Quarter 4 (44)/Semester 2 (85) | | 2 | 3 | 4 | 5 | 6 | 7 | 8 | | | | |
| 10 | 11 | 12 | 13 | 14 | 15 | 16 | | | 30 | Last Student Day-Dismissal After Lunch | | 9 | 10 | 11 | 12 | 13 | 14 | 15 | | | | |
| 17 | 18 | 19 | 20 | 21 | 22 | 23 | | | 30 | Last Teacher Day | | 16 | 17 | 18 | 19 | 20 | 21 | 22 | | | | |
| 24 | 25 | 26 | 27 | 28 | 29 | 30 | | Jun | 2 | Graduation | | 23 | 24 | 25 | 26 | 27 | 28 | 29 | | | | |
| | | | | | | | 172 | <<<Total Student Days - - - - - Total Teacher Days>>> | | | | | | | | | | 182 | Fall Open House Schedule | | | |

KEY:

| | |
|--|------------------------------|
| | No School/No Staff |
| | No School/Staff Dev/Work Day |
| | PLCs / Early Dismissal |
| | Early Dismissal |
| | P/T Conference-Event Notes |
| | P/T Conference-Early Dismiss |
| | PBL Parent Night @ BHS |
| | End Quarter |

| | | |
|----|-------------------|-----------------------|
| 42 | 1 Sep 5 - Nov 3 | EMS@1:20pm /HS@1:30pm |
| 43 | 2 Nov 7 - Jan 19 | |
| 42 | 3 Jan 23 - Mar 22 | |
| 45 | 4 Mar 26 - May 30 | |

Designated Weather Makeup Days

5 Flexible Learning Days
Additional makeup days beginning May 31st

Fall Open House Schedule

| | |
|------------|------------------------|
| 7th grade | Tu, Aug 22/5:30-6:45pm |
| 8th grade | Tu, Aug 22/7-8:15pm |
| 9th grade | Tu, Aug 15/5:30-6:45pm |
| 10th grade | Tu, Aug 15/7-8:15pm |
| 11th grade | M, Aug 14/7-8:15pm |
| 12th grade | M, Aug 14/5:30-6:45pm |

Gr K-6 Back to School Conferences

| | |
|-----------|----------------|
| Tu, Sep 5 | 11:15am-6:30pm |
| W, Sep 6 | 8am-3:45pm |



COMMUNITY EDUCATION

School District 846
810 Beede Ave.,
Breckenridge, MN 56520



NON-PROFIT
ORGANIZATION
U.S. POSTAGE
Permit No. 91
Breckenridge, MN 56520

*****ECRWSS****

Postal Customer

On-line registration at www.isd846.org



Welcome
Back to School

